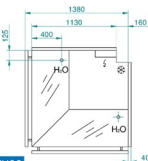
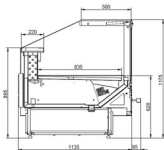




STANDARD FEATURES

- Temperature Range 0 / +4
- Electronic Controller
- Illuminated Display
- Hydraulic Glass
- Fan Assisted
- Chrome Bumper
- S/steel Worktop
- Expansion Valve
- Electric Defrosting
- S/steel Under storage and Display Deck
- R404A Refrigerant
- Multiplexing requires Kit
- Available as Remote



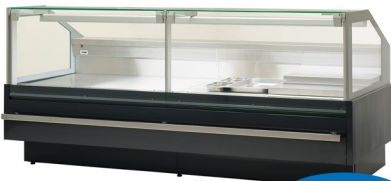
EX90

COLOUR OPTIONS (4 - 6 WEEKS)

- Flame Red 3000
- Genfian Blue 5010
- Signal Grey 7004
- Signal White 9003
- Mint Green 6029
- Rape Yellow 1021



Tucana Flat Glass Integral Serveover



AVAILABLE AS REMOTE

SERVEOVERS

TECHNICAL SPECIFICATIONS

| Model | Description | Width | Depth | Height | Power | Weight |
|-----------|-----------------|--------|-------|--------|-------|--------|
| TUC125FG | Serveover | 1330mm | 1135d | 1175h | 520W | 130KG |
| TUC187FG | Serveover | 1955mm | 1135d | 1175h | 799W | 195KG |
| TUC250FG | Serveover | 2580mm | 1135d | 1175h | 1054W | 260KG |
| TUC375FG | Serveover | 3830mm | 1135d | 1175h | 1591W | 390KG |
| TUC901-FG | Internal Corner | 1380mm | 1380d | 1175h | | |
| TUC901-FG | External Corner | 1380mm | 1380d | 1175h | | |